

# THE DALLES AWS BACKUP DEBRIS MANAGEMENT DDR AND P&S

FFDRWG INITIAL DDR UPDATE MEETING

MARIE ADAMS  
PROJECT MANAGER

MEDHI ROSHANI  
TECHNICAL LEAD

JON RERECICH  
PME-F FISH BIOLOGISTS

NOVEMBER 07, 2024



U.S. ARMY



US Army Corps  
of Engineers®



# BACKGROUND:

## Two Fish Units

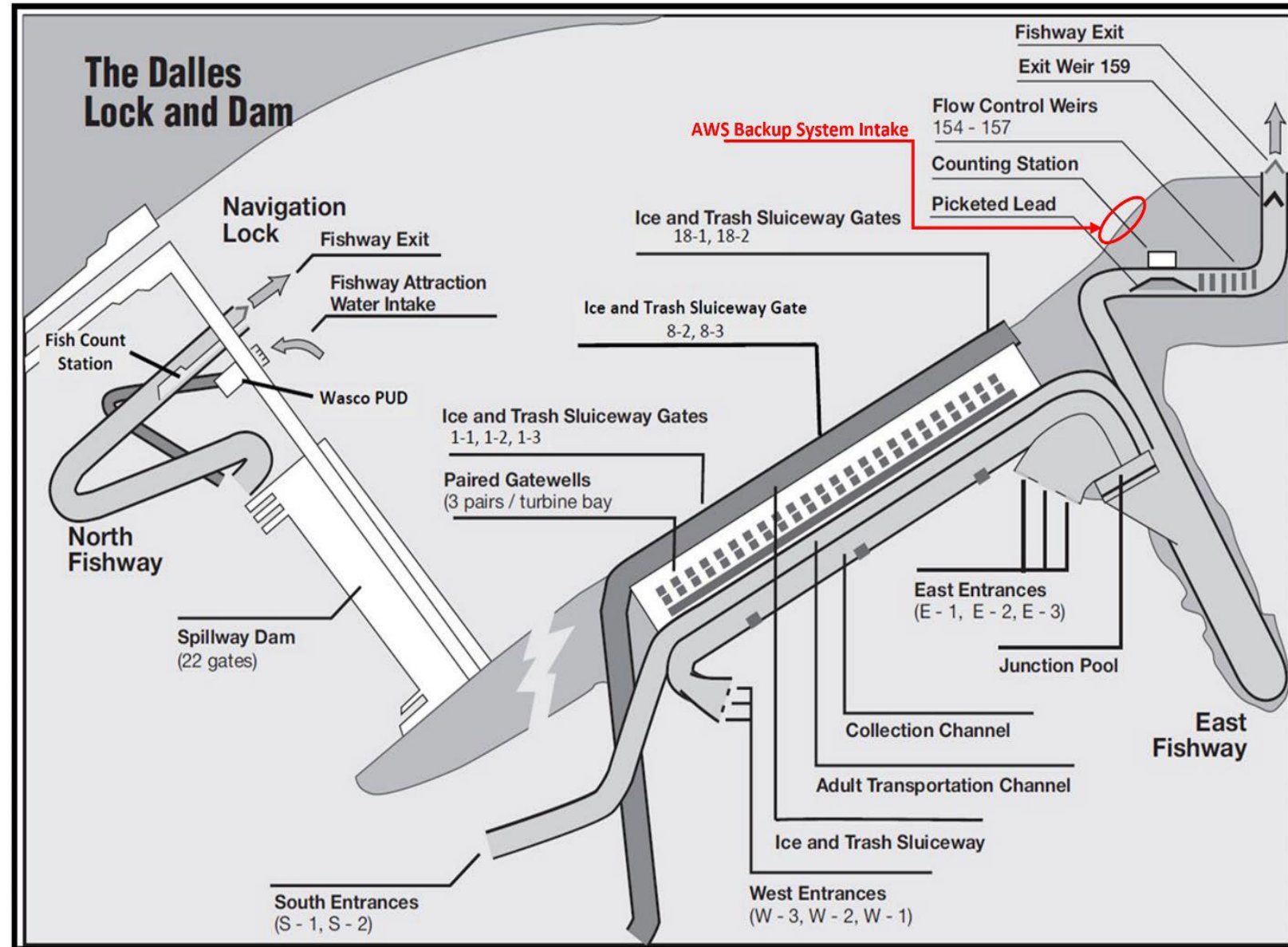
- supply 5000 cfs total.
- The AWS supplies water to the east, west, and south fish ladders entrances of the East Fishway.

## The AWS Backup System (AWSBS)

- Flow range: 1400-1600 cfs
- Assures east entrances operate at FPP criteria.
- *Single FU Outage*
  - South & west entrances at less optimal flow.
- *Double FU Outage*
  - South & west entrances closed.

## Fish Unit Rehabilitation

- Requires the backup system to operate during the rehab.
- 1 unit/year for total of 2 years.



# PROJECT PURPOSE & MILESTONE STATUS

## Project Purpose

The Dalles AWS Backup Debris Management project is to provide an alternative for removing debris from the trash racks of the Auxiliary Water Backup System (AWSBS) inlet.

## Pre-Construction Milestone Schedule

Milestone	Sep-24	Oct-24	Nov-24	Dec-24	Jan-25	Feb-25	Mar-25	Apr-25	May-25	Jun-25
Project Award	★									
50% P&S +DDR	—									
FFDRWG Review #1				23DEC	20JAN					
90% P&S +DDR				—						
FFDRWG Review #2							24MAR	21APR		
90% Backcheck P&S + DDR							—			
FFDRWG Backcheck Communication									~28MAY	
DDR & P&S Complete										27JUN



Complete



Project Development



FFDRWG Reviews

# **PREFERRED ALTERNATIVES 90% EDR**

In addition to cycling the valves:

- Alternative 4-1: Floating debris boom
- Alternative 11: Hoisted brush system using the existing trash racks
- Alternative ME-1: Level sensors connected to SCADA

## **DDR CHANGES**

Removed floating debris boom per Tom's recommendation.



# NEXT STEPS

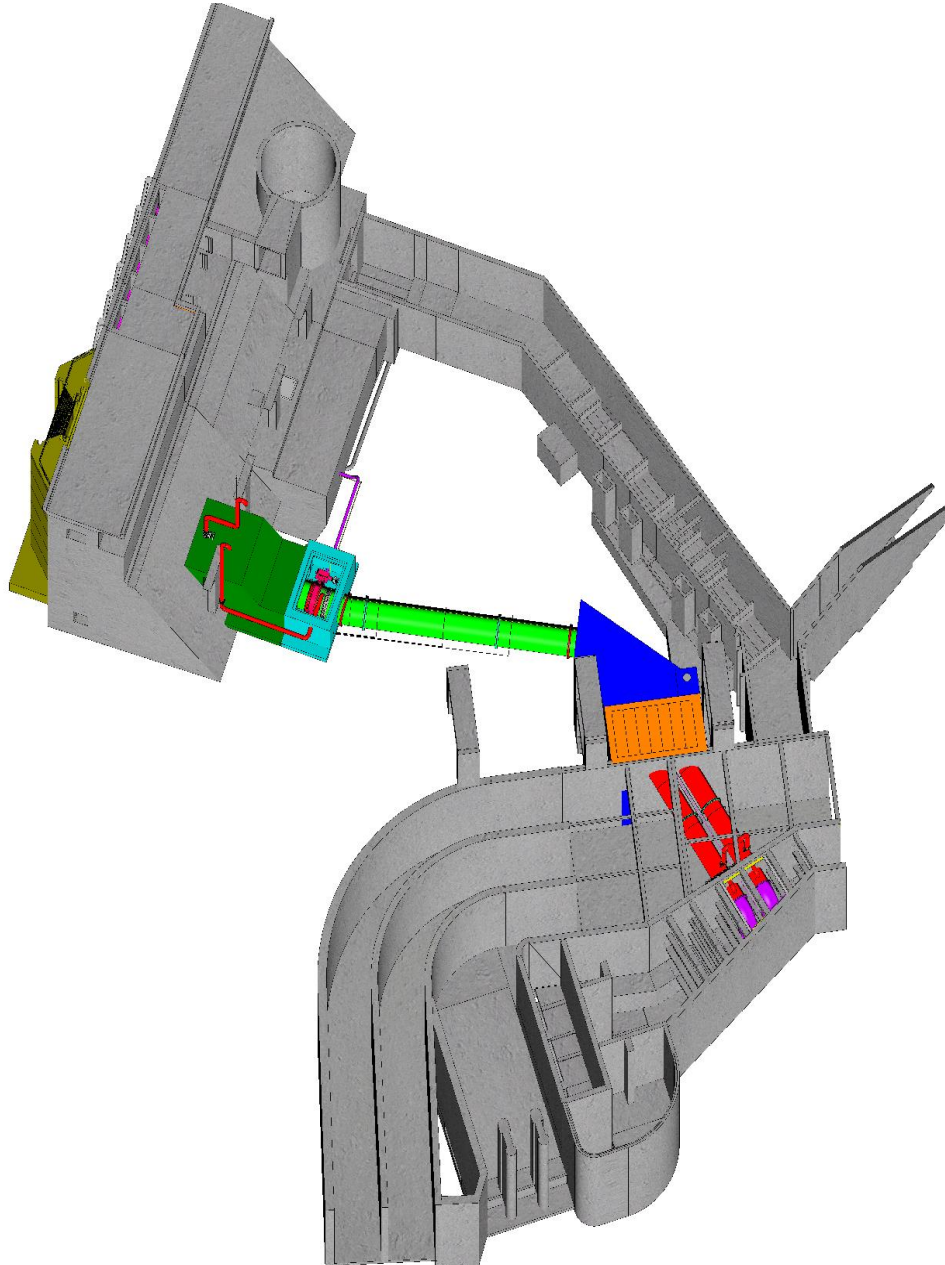
## Projected Timeline









Phase	FY25				FY 26				FY 27				FY28				FY32
	Q1	Q2	Q3	Q4	Q1	Q2	Q3	Q4	Q1	Q2	Q3	Q4	Q1	Q2	Q3	Q4	
DDR and P&S																	
Construction Contract Advertise to Award																	
Construction																	
<i>Fish Unit Rehab</i>																	Phase 1 Start Templated

- Construction timeline could be longer if parts fabrication requires long lead times.
- Construction will be complete well before the Fish Unit Rehabilitation Project is scheduled to start Phase 2 Construction.



# QUESTIONS/COMMENTS?



- |   |                      |
|---|----------------------|
|    | 10 FOOT VALVE ROOM   |
|    | THRUST BLOCK         |
|    | 7 FOOT VALVE ROOM    |
|    | 10 FOOT PIPE         |
|    | 7 FOOT PIPES         |
|    | THRUST BLOCK         |
|    | DEWATERING STRUCTURE |
|  | PENSTOCK OUTFALL     |